



UNIVERSITY OF LINCOLN

INTERNATIONAL PROSPECTUS 2026



134th in
the World

Times Higher Education Young
University Rankings (2024)



Gold Standard
Teaching

Teaching Excellence Framework (2023)



A student and staff
community with more
than 100 nationalities



18 of our subject
areas are ranked in
the top 20 in the UK

Guardian University Guide (2025)



Queen's Anniversary
Prize Winner (2023)



QS Five-Star University

QS stars rating system of global universities (2023)



Contents

| | |
|----|------------------------------------|
| 6 | Achieving Your Potential |
| 8 | Future Ready |
| 10 | Research With Impact |
| 12 | University of Lincoln Scholarships |
| 14 | A City Steeped in History |
| 18 | A Great Location |
| 20 | Life on Campus |
| 24 | A Place To Call Home |
| 29 | Lincoln’s Students’ Union |
| 30 | A Supportive Community |
| 32 | Chat With Our Students |
| 34 | Preparing to Apply to University |
| 37 | How to Apply |
| 38 | Undergraduate Study |
| 48 | Postgraduate Taught Study |
| 56 | Postgraduate Research |



Achieving Your Potential

Going to university in the UK can open up lots of interesting, exciting, and even life-changing opportunities. There's simply nothing quite like it.

As a University of Lincoln student you will be joining a campus university with a reputation for teaching of the highest standard. You'll be part of a great community too where we hope you will feel encouraged and supported to achieve your potential.

We take pride in our inspirational teaching and are among a select group of universities to achieve a Triple Gold rating – the highest

standard possible – for both student experience and student outcomes, as well as overall performance in the national Teaching Excellence Framework (TEF) 2023.

Our unique model of learning is all about preparing you for the real world – but don't just take our word for it, hear from our students and alumni...



"From the supportive academic environment to the welcoming international student community, I've grown both professionally and personally since arriving at Lincoln. My course is exactly what I was looking for – practical, skills-based, and challenging in the best way."

Tram Anh Nguyen, MSc Digital Marketing Student (Vietnam)



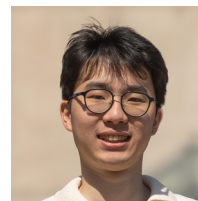
"As part of the student community at Lincoln I made friends from around the world and experienced a vibrant and inclusive learning environment, which helped me to develop a global perspective on my subject."

Foster Anane, Lincoln Alumnus (Ghana)



"My time at the University of Lincoln played a crucial role in shaping my career. The academic environment fostered critical thinking and problem-solving skills... I had the opportunity to work on real-world projects and gain hands-on experience with emerging technologies, all of which laid the foundations for launching my startup business."

Vasanthi Saraswathi, Lincoln Alumnus (India)



"Studying at Lincoln provides a range of different learning opportunities to support my personal development, such as engaging in the Lincoln Award and volunteering for local non-profit organisations."

Hiu Yip Nam, BSc Health and Social Care Student (Hong Kong)

Future Ready

At the University of Lincoln, we aim to encourage you to challenge your perspective, explore new ideas and concepts, and to develop the skills and confidence to thrive in a changing world.

Building Your Skills

Our degree courses are packed with features to help you develop the skills and expertise that employers are looking for. Many of our courses are accredited by recognised and respected organisations, such as the Chartered Management Institute, and include employability, professional practice, or work-based learning modules that can help you apply theory to practice*.

There's also a range of real-world learning opportunities to get involved with, such as the Lincoln Student Managed Investment Fund – a hands-on initiative where students raise capital from donors to invest in stocks and shares on the London Stock Exchange, and the Lincoln Law Clinic, which provides pro-bono legal advice to staff and students at the University.

Industry Insights

Our Futures Programme provides opportunities to hear from inspiring guest speakers, who are invited to talk about their career and to discuss emerging industry trends. You can also access Lincoln Connect, which is the University of Lincoln's online mentoring platform, where you can develop your networking skills and build a professional community.



Scan the QR code to find out more

Careers Guidance and Support

Our Careers and Employability Team offer a whole host of support services and events to help you on your chosen career path, including:

- One-to-one appointments with careers advisors
- Advice on creating a CV, covering letter, and LinkedIn profile
- Networking opportunities with recruiters and potential employers at on-campus job fairs
- Workshops and talks offering insights into different industries, career paths, interview techniques, assessment centres, and workplace essentials
- Access to CareerLinc, our online platform featuring thousands of graduate job vacancies, work placements, and part-time roles
- Mock interviews for graduate roles
- Continued access to a range of dedicated careers support for up to two years after graduating

Launching Your Own Business

If you have the next great business idea, our Student Enterprise Team can help make it a reality. University of Lincoln students and graduates can access mentoring, workshops, networking, and funding to develop the skills needed to kick-start a business.



Lincoln is ranked in the top 10 universities in the UK for enabling start-up businesses

Higher Education Statistics Agency (2025)



Five Stars for Employability

QS Stars Rating System (2023)



“Guest lectures from industry professionals, fieldwork opportunities, and interactive seminars have enriched my learning experience. I have also taken part in extra-curricular workshops and networking events that have helped to build my skills beyond the classroom.”



Anthonia Utosu,
MSc Engineering Management
Student (Nigeria)

Research With Impact

Through our research we are striving to solve some of the biggest challenges facing the world today. Here are some of the ways our research is aiming to change society for the better.

A Net-Zero Future

From addressing the causes of climate variations, to powering a low-carbon future, and exploring ecological justice measures, our research institutes are delivering impactful research which is focused on creating a sustainable future for generations to come.



Innovation in Agri-food Technology

Researchers at Lincoln are developing new approaches in areas such as crop science, robotics, energy efficiency, automation and AI, that are having a major impact on improving productivity, efficiency, and sustainability in the food supply chain.



Research Excellence Framework

The quality of our research was recognised in the most recent Research Excellence Framework (REF) – a system for measuring research excellence in higher education institutions in the UK – which revealed that more than three quarters (79 per cent) of the University of Lincoln's research was judged to be internationally excellent or world-leading.



Scan the QR code to find out more

Improving Rural and Coastal Health

Working with local, national, and international partners, our academics are developing new insights into a wide range of health-related challenges, including pre-hospital treatment, healthy ageing, child wellbeing, and community-based care.



University of Lincoln Scholarships

At the University of Lincoln, we are proud to offer an extensive range of scholarships to help as many students as possible to benefit from studying in the UK.

Our scholarships are designed to help make education more accessible whilst also recognising achievement and potential.

International students joining a University of Lincoln undergraduate or postgraduate taught degree course in 2026/27 may be eligible to receive a scholarship from £1,000 to £5,000 off tuition fees*.

We have also established the Global Leaders Scholarship, designed to recognise international applicants who can demonstrate the highest levels of academic, personal, and extracurricular endeavour. Students who meet the eligibility criteria for this scholarship will be entitled to receive 50% off tuition fees for one year of study*.



Scan the QR code
to find out more



“Studying abroad had been a dream of mine for many years. Receiving the Global Leaders Scholarship from the University of Lincoln was the spark that set everything in motion.”

Juan Lesser Carrillo, MSc Project Management Student (Mexico)

*Visit our website to find out more about our range of scholarships and eligibility criteria.





A CITY Steeped IN History

Lincoln is regarded as one of England's great historic cities and we're proud to call it our home. Our Brayford Pool Campus is located in the heart of the city centre, meaning there's so much to do right on your doorstep.

History and Heritage

The city's historic Cathedral Quarter and Bailgate area is filled with quirky shops and places to eat. The area is also home to Lincoln Cathedral, one of Europe's most celebrated medieval buildings, which has

been an iconic part of the city's skyline for nearly 1,000 years and is currently the setting of our graduation ceremonies. At the nearby Lincoln Castle, you can walk in the footsteps of kings and see one of only four surviving originals of the 1215 Magna Carta.

The Great Outdoors

You don't have to go far to experience the great outdoors. Lincoln is surrounded by picturesque countryside and is home to Green Flag award-winning parks, including the Arboretum, Boultham Park, and Hartsholme Country Park.

The wider county is also home to some of the UK's cleanest and safest beaches, including Mablethorpe and Sutton on Sea, alongside Areas of Outstanding Natural Beauty, such as the Lincolnshire Wolds.



The West Common ↑

Cornhill Quarter ↓



Retail Therapy

Lincoln's High Street is home to all your shopping needs, offering a mixture of independent shops, designer brands, popular chains, and artisan stalls at the regular markets. Whether you're stocking up on essentials, choosing a new outfit, or enjoying a shopping trip with friends, you never need to step outside the city.

High Street ↓



Steep Hill ↑

Immerse Yourself in Culture

Lincoln has a vibrant cultural scene with a variety of entertainment venues across the city, from comedy clubs and live music venues, to theatres, museums and galleries. Students can enjoy a range of activities, including virtual sports and gaming, quiz nights, escape rooms, pottery painting and much more.

Lincoln Museum & Usher Gallery ↓



Stack Entertainment Venue ↓



Lincoln Castle ↑

Good Enough to Eat

Near to campus, you'll find a wide variety of restaurants, pubs, and bars, with a range of cuisine from around the world within walking distance. The recently renovated Cornhill Quarter is another lively social hub for meals out, cocktails, or street food, with a bustling market hosting a variety of local traders.

Castle Square ↓



Brayford Waterfront ↑



Scan the QR code to tour some of our students' favourite places in Lincoln

A Great Location

Lincoln is located in the East Midlands region of England. Thanks to its central location, the city is a great starting point for exploring the rest of the UK and its history and culture.





A Walkable City

Once you're here, you will have little need for a car. Much of the city is within walking distance and there are many cycle routes connecting Lincoln with local towns and villages.

Transport Links

Lincoln railway station is a few minutes' walk from our city-centre campus. There are direct trains from the station to cities such as London, Nottingham, and Sheffield. Lincoln's central bus station is also near to the University and provides frequent bus routes across the city and beyond.

Travelling by Car From Lincoln

| | | |
|-------------------------|-------------------------------------------------------------------------------------|------------------|
| East Midlands Airport |  | 1hr 15 minutes |
| Birmingham Airport |  | 1hr 40 minutes |
| Manchester Airport |  | 2 hrs 10 minutes |
| London Heathrow Airport |  | 2 hrs 50 minutes |

Travelling by Train From Lincoln

| | | |
|---------------------|-------------------------------------------------------------------------------------|----------------|
| Nottingham |  | 50 minutes |
| Sheffield |  | 1hr 20 minutes |
| London King's Cross |  | 2 hrs |





Life ON Campus

Located in the centre of the city of Lincoln, our Brayford Pool Campus is big enough to have almost everything you could need throughout your studies, yet close-knit enough to feel like you're part of a community.

From our centrally located student wellbeing hub and medical centre, to a range of sports and fitness facilities, and social spaces, our campus is home to much more than just lecture halls.



Pier Café ↓



Great Central Warehouse Library ↓



Sports Centre ↓



Sarah Swift Building ↑



Brayford Pool ↓



Isaac Newton Building ↑

Buildings and Facilities

Our buildings provide innovative and flexible learning spaces. No matter which course you choose, we aim to provide facilities that help you prepare for your future career, including scientific laboratories, state-of-the-art clinical suites, specialist arts studios, and advanced research facilities.

Libraries and Study Spaces

Our libraries give you access to databases, special collections, books and journals, and feature dedicated study spaces providing a calm, comfortable environment for you to work alone or collaborate with others.

Expert teams are also on hand to support your learning through drop-ins, workshops, and individual appointments.

Socialising and Entertainment

Life on campus is not all about studying. Whether grabbing a coffee at The Swan pub or Towers bar, enjoying a show at the Lincoln Arts Centre, or watching a gig at The Engine Shed – the region's largest live music and entertainment venue – there are lots of activities and amenities for you to enjoy when taking a break from the books.

Keeping Fit

The University's Sports Centre features a fully equipped gym, squash courts, five-a-side football pitches, and much more. There are also regular classes such as Zumba, HIIT, and boxing, which are a great way to make friends and keep fit.

Sustainability on Campus

We recognise that we have a responsibility to reduce our environmental impact and to provide a sustainable future for generations to come. To achieve our ambitions, we've committed to a 60% reduction in carbon emissions by 2030 and achieving net-zero emissions by 2040.

Our green-space projects across campus are helping to improve biodiversity. These include a kitchen garden, wildflower meadow, an observation hive, and a wildlife-friendly campus campaign. We have also embedded net-zero thinking in our teaching and learning, and many of our courses now include modules focusing on sustainability issues.



Scan the QR code to find out more



A Place TO CALL Home

Where you live whilst at university can play a big part in your overall student experience. It's not just about a place to stay, it's about creating memories, forming friendships, and feeling like you belong.

All of our accommodation at the University of Lincoln is either on campus or nearby. So whether you are heading to a lecture, needing to use the library, or catching up with friends in the city centre, it's all within walking distance.

Our halls of residence include Cygnet Wharf, St Marks, 179 High Street, The Gateway, and Valentine Court.

Each one has its own character and is designed to create a sense of community to help you feel at home.

No matter which residence you choose, you'll have your own bedroom which includes furniture such as a bed, desk, wardrobe and storage. All rooms in University-managed accommodation are en-suite, with studio rooms available at The Gateway.



Top 5 in the UK for Halls and Accommodation

Whatuni Student Choice Awards (2025)

Affordable Living

We understand that going to university is a big investment and to help support as many students as possible, we offer a range of affordable accommodation options.

The price of our accommodation includes utility bills, WiFi, personal possessions insurance, access to our on-campus gym and fitness classes, and so much more. A deposit or guarantor is not required and there is the option to pay through instalments to help you manage your budget.

Help When You Need It

Our accommodation is managed by our helpful Accommodation Services Team who are available to support you throughout your time living in our residences.

You'll also be supported by our dedicated Residence Life Team who run a variety of events throughout the year such as games nights, movie nights, and study sessions, giving you the chance to meet new people.

How To Apply

After you have accepted your offer of a place on a course at the University of Lincoln, you will be able to apply for University-managed accommodation using our online application system.

As part of your application, you'll be able to highlight any specific requirements you may have alongside your room preferences.



Scan the QR code to find out more



St Marks ↑



179 High Street ↑



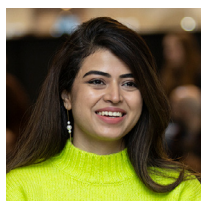
The Gateway ↑



Cygnet Wharf ↑



Valentine Court ↓



“My favourite memory from my university experience is living at St Marks, where I made lifelong friends. I wasn’t just a student there – I was part of a diverse, international family.”

Ramsha Lftikhar, Lincoln Alumnus (Pakistan)



Lincoln's Students' Union

Our Students' Union (SU) puts you at the heart of student life. As an independent organisation run on behalf of University of Lincoln students, the SU offers representation, support, and a wide range of events and activities to help make your time here an unforgettable experience.



Representing You

Lincoln's student leaders, who are elected by the student body, ensure that the things that matter to you most are made a top priority. They are supported by 15 Student Experience Officers operating across the University to make sure every voice is heard. Students are encouraged to feed back to their representatives who can then advocate for positive change on their behalf.

The Home of Sports and Societies

The SU oversees more than 100 sports teams and societies. Whether you're into Formula 1, K-pop, cheerleading, or American football, joining one of these societies is a great way to have fun, develop new interests, make friends, and become part of the Lincoln community.

Every year, more than 1,000 students get involved in the highlight of the sporting calendar: Varsity. The event sees the University of Lincoln and the University of Hull go head-to-head in over 30 activities, and Lincoln has been crowned Varsity champion now for seven years running.

Physical and mental wellbeing can often go hand-in-hand. Our Feel Good Programme offers free and non-competitive social sport sessions for students to take part in during their time at Lincoln.

Making a Difference

The SU offers a wide range of volunteering opportunities in the local community, helping you meet new people and develop transferable skills. We also provide professional development opportunities, such as becoming a Programme Rep or a Feel Good Sports Ambassador, both of which can add real value to your CV.

Support and Advice

The Students' Union Advice Centre has a team of trained advisors who can provide independent and confidential help, advice, and representation. The SU also offers cost-of-living support to students who may be experiencing difficulties.



Scan the QR code to find out more

A Supportive Community

We understand that leaving home and starting university is a big step, but it's important to know that you're not alone and that we're here to support you.

The University of Lincoln offers a whole host of support services from mental health and expert advice in money matters, to guidance in academic writing and preparing for your first graduate job interview.

Health and Wellbeing

We know that it's not possible for everyone to travel home to access healthcare, which is why we have an on-campus Health Service where you can make an appointment to see a local doctor (known as a 'GP' or General Practitioner). The Health Service is located at the heart of our Brayford Pool campus, meaning you are never far from getting the help you need.

Academic Support

When you join us you will be assigned a personal tutor. They can help you settle into student life and be a regular point of contact for queries you may have about studying, your academic progress, or any personal support required.

Student Advice Team

The Student Advice Team are located within the Student Support Centre. They offer a free, confidential, and impartial legal service to all students at the University on matters such as finances, housing, visas and immigration, employment, study issues such as interruption and extenuating circumstances, and much more.

Keeping You Safe

Everybody deserves to feel safe and our 24/7 Security Team are available across campus if you should need them. We also have a dedicated campus Police Liaison Officer who can offer advice around any issues you may have involving crime and safety.



Scan the QR code to find out more



Awarded Silver for Mental Health and Wellbeing Support

Whatuni Student Choice Awards (2025)



Chat WITH OUR Students

If you are curious about what it's like to study at the University of Lincoln we recommend chatting with those who know it best – our students.

From sharing their experiences to answering your questions, our student ambassadors are available online to chat to about what it's like to be part of our community.



Scan the QR code
to find out more

Preparing to Apply to University

Studying in the UK can be a life-changing experience. It is also a big investment and you will need to take some time to think about the options available, how much it will cost, and what you will need to prepare before you apply.

Choosing a Course

The University of Lincoln offers a wide range of courses and with lots to choose from, we know it can be a challenge when deciding which one is right for you.

Thinking about your career ambitions and how your studies may help you to achieve them can be a great starting point. You might also want to think about speaking with our academic staff, or with some of our students, to find out more about what it's like to study here.

Each course we offer has a dedicated page on our website. This is where you can find out more about the structure of the course, the modules that you will study, and the assessment methods we use. Our course pages also contain information about the entrance requirements you will be expected to meet (including language proficiency requirements), alongside important details regarding tuition fees and study-related costs.

Creating a Budget

The cost of going to university in the UK might be very different to studying in your home country. To help you prepare, it's really important that you take the time to research the costs involved.

To help plan your budget, we allow students to spread their tuition fee payments across nine equal monthly instalments.

Our website contains lots of helpful information on topics such as the flexible payment options we offer, tuition fees and study costs at Lincoln, and our wide range of scholarships. You can also find out more about the cost of living in Lincoln as a student and the opportunities available for finding a part-time job.

Visas and Immigration

Most international students will need to obtain a Student visa to be able to study in the UK. There are various requirements you will need to meet to be eligible to receive a visa. This includes showing sufficient evidence that you have enough funds to cover the cost of your studies and living expenses whilst in the UK. We recommend visiting the UK Government website for the latest information regarding visa fees and eligibility requirements.



Scan the QR code
to find out more



Getting Help and Support

It is important to know that we are here to help, and our International Enquiries Team are available to speak to if you need any support throughout our admissions process.

Email:
internationalenquiries@lincoln.ac.uk

Telephone:
+44 (0)1522 308108

WhatsApp:
+44 (0)7868 089210

How to Apply

Undergraduate Courses

If you are thinking of studying an undergraduate degree at the University of Lincoln in 2026, you will need to submit your application form through the Universities and Colleges Admissions Service (UCAS).

You should aim to submit your application before the equal consideration deadline on Wednesday 14 January 2026. We may be able to accept applications after this deadline if places are still available.

After you have submitted your application our Admissions Team will review the information you have provided.

Once your application has been reviewed you will receive a notification from the University via the UCAS Hub. It's important to check this regularly as you may be invited to an interview or asked to provide further documents before we can offer you a place at Lincoln.

Postgraduate Courses

Applications for our postgraduate courses must be submitted through our online application system. To apply please visit the course page on our website and click 'apply now'.



We have created a step-by-step guide on our website where you can find all the information you need to know about our admissions process.

From advice on how to submit your application form, to information on meeting your offer conditions and arranging your visa, our website is packed full of advice and guidance to help you on your journey to the University of Lincoln.



Scan the QR code to find out more



Undergraduate Study

An undergraduate degree is typically the next level of academic qualification that follows school or college in the UK, and is studied at university or another higher education provider.

The University of Lincoln offers over 140 undergraduate courses, also known as Bachelor's degrees, which typically take three years to complete. Depending on the course, you may receive awards such as a BA (Bachelor of Arts), BSc (Bachelor of Science), BEng (Bachelor of Engineering), or LLB (Bachelor of Laws).

Integrated Master's

A number of our courses offer a four-year integrated Master's version, allowing you to complete an additional year of study which is often focused on more advanced research skills and topics.

Joint Honours

We offer a range of joint honours degrees, which allow you to study more than one subject and combine them into a single qualification.

Sandwich Degrees

Some of our courses provide the opportunity to study a one-year work placement in industry, or include the option to study abroad at a partner university in another country, as part of a sandwich degree.

Subject Excellence

We are proud to be ranked in the top five universities in the UK across a number of subject areas within the Guardian University Guide 2025. These include:

- 1st in the UK for Animal Science and Agriculture
- 1st in the UK for Forensic Science
- 2nd in the UK for Product Design
- 2nd in the UK for Creative Writing
- 3rd in the UK for Hospitality, Event Management and Tourism
- 3rd in the UK for Marketing and Public Relations
- 3rd in the UK for Zoology
- 5th in the UK for Paramedic Science



Scan the QR code
to find out more



Lincoln International Business School

| Course Title | IELTS Requirements* | Tuition Fees** |
|---------------------------------------------|---------------------------------------|----------------|
| BA (Hons) Accountancy and Finance | 6.0 with a minimum of 5.5 per element | £16,900 |
| BA (Hons) Business | 6.0 with a minimum of 5.5 per element | £16,900 |
| BA (Hons) Business and Finance | 6.0 with a minimum of 5.5 per element | £16,900 |
| BA (Hons) Business and Management | 6.0 with a minimum of 5.5 per element | £16,900 |
| BA (Hons) Business and Marketing | 6.0 with a minimum of 5.5 per element | £16,900 |
| BA (Hons) Business Economics | 6.0 with a minimum of 5.5 per element | £16,900 |
| BA (Hons) Global Business | 6.0 with a minimum of 5.5 per element | £16,900 |
| BA (Hons) International Business Management | 6.0 with a minimum of 5.5 per element | £16,900 |
| BA (Hons) International Tourism Management | 6.0 with a minimum of 5.5 per element | £16,900 |
| BA (Hons) Marketing and Advertising | 6.0 with a minimum of 5.5 per element | £16,900 |
| BA (Hons) Sports Business Management | 6.0 with a minimum of 5.5 per element | £18,300 |
| BSc (Hons) Banking and Finance | 6.0 with a minimum of 5.5 per element | £16,900 |
| BSc (Hons) Economics | 6.0 with a minimum of 5.5 per element | £16,900 |
| BSc (Hons) Economics and Finance | 6.0 with a minimum of 5.5 per element | £16,900 |
| BSc (Hons) Events Management | 6.0 with a minimum of 5.5 per element | £16,900 |

Lincoln Law School

| Course Title | IELTS Requirements* | Tuition Fees** |
|--------------------------------|---------------------------------------|----------------|
| LLB (Hons) Law | 6.0 with a minimum of 5.5 per element | £16,900 |
| LLB (Hons) Law (Senior Status) | 6.0 with a minimum of 5.5 per element | £16,900 |
| LLB (Hons) Law and Criminology | 6.0 with a minimum of 5.5 per element | £16,900 |

*As an alternative to IELTS we also accept a wide range of English language qualifications and proficiency tests. Further information regarding the types of qualifications and tests we accept, and the scores/grades you will need, can be found on our website.

Lincoln School of Creative Arts

| Course Title | IELTS Requirements* | Tuition Fees** |
|--------------------------------------------------|---------------------------------------|----------------|
| BA (Hons) Animation and Visual Effects‡ | 6.0 with a minimum of 5.5 per element | £18,300 |
| BA (Hons) Creative Writing | 7.0 with a minimum of 6.5 per element | £18,300 |
| BA (Hons) Dance | 6.0 with a minimum of 5.5 per element | £18,300 |
| BA (Hons) Drama and English | 6.0 with a minimum of 5.5 per element | £17,600 |
| BA (Hons) Drama, Theatre and Performance | 6.0 with a minimum of 5.5 per element | £18,300 |
| BA (Hons) English and Creative Writing | 7.0 with a minimum of 6.5 per element | £16,900 |
| BA (Hons) Film and Media Studies† | 6.0 with a minimum of 5.5 per element | £18,300 |
| BA (Hons) Film Production‡ | 6.0 with a minimum of 5.5 per element | £18,300 |
| BA (Hons) Fine Art | 6.0 with a minimum of 5.5 per element | £18,300 |
| BA (Hons) Media Production‡ | 6.0 with a minimum of 5.5 per element | £18,300 |
| BA (Hons) Music | 6.0 with a minimum of 5.5 per element | £18,300 |
| BA (Hons) Musical Theatre | 6.0 with a minimum of 5.5 per element | £18,300 |
| BA (Hons) Sound and Music Production‡ | 6.0 with a minimum of 5.5 per element | £18,300 |
| BA (Hons) Technical Theatre and Stage Management | 6.0 with a minimum of 5.5 per element | £18,300 |

**Tuition fees are charged for each year of study and are subject to an increase of 2% annually, rounded to the nearest £100. The most up-to-date information regarding tuition fees and additional study costs can be found on our website.

†Subject to validation. ‡Subject to revalidation.

Lincoln School of Design and Architecture

| Course Title | IELTS Requirements* | Tuition Fees** |
|---------------------------------------------------|---------------------------------------|----------------|
| BA (Hons) Architecture‡ | 6.0 with a minimum of 5.5 per element | £18,300 |
| BA (Hons) Creative Advertising | 6.0 with a minimum of 5.5 per element | £18,300 |
| BA (Hons) Graphic Design | 6.0 with a minimum of 5.5 per element | £18,300 |
| BA (Hons) Illustration | 6.0 with a minimum of 5.5 per element | £18,300 |
| BA (Hons) Interior Architecture and Design‡ | 6.0 with a minimum of 5.5 per element | £18,300 |
| BA (Hons) Photography | 6.0 with a minimum of 5.5 per element | £18,300 |
| BA (Hons) Product Design | 6.0 with a minimum of 5.5 per element | £18,300 |
| BSc (Hons) Architecture and the Built Environment | 6.0 with a minimum of 5.5 per element | £18,300 |

Lincoln School of Humanities and Heritage

| Course Title | IELTS Requirements* | Tuition Fees** |
|---------------------------------------------|---------------------------------------|----------------|
| BA (Hons) Classical Studies | 6.0 with a minimum of 5.5 per element | £16,900 |
| BA (Hons) Conservation of Cultural Heritage | 6.0 with a minimum of 5.5 per element | £18,300 |
| BA (Hons) English | 7.0 with a minimum of 6.5 per element | £16,900 |
| BA (Hons) English and History | 7.0 with a minimum of 6.5 per element | £16,900 |
| BA (Hons) History | 6.0 with a minimum of 5.5 per element | £16,900 |
| BA (Hons) Modern History | 6.0 with a minimum of 5.5 per element | £16,900 |
| BA (Hons) Philosophy‡ | 6.0 with a minimum of 5.5 per element | £16,900 |

*As an alternative to IELTS we also accept a wide range of English language qualifications and proficiency tests. Further information regarding the types of qualifications and tests we accept, and the scores/grades you will need, can be found on our website.

‡Subject to revalidation.

School of Education and Communication

| Course Title | IELTS Requirements* | Tuition Fees** |
|-----------------------------------------------|---------------------------------------|----------------|
| BA (Hons) Education | 6.0 with a minimum of 5.5 per element | £16,900 |
| BA (Hons) Journalism | 7.0 with a minimum of 6.5 per element | £18,300 |
| BA (Hons) Journalism Studies | 7.0 with a minimum of 6.5 per element | £18,300 |
| BA (Hons) Media and Communications† | 6.0 with a minimum of 5.5 per element | £18,300 |
| BA (Hons) Sports Journalism | 7.0 with a minimum of 6.5 per element | £18,300 |
| BSc (Hons) Psychology and Inclusive Education | 6.0 with a minimum of 5.5 per element | £17,600 |

School of Engineering and Physical Sciences

| Course Title | IELTS Requirements* | Tuition Fees** |
|---------------------------------------------------------------|---------------------------------------|----------------|
| BEng (Hons) Electrical and Electronic Engineering | 6.0 with a minimum of 5.5 per element | £18,300 |
| BEng (Hons) General Engineering | 6.0 with a minimum of 5.5 per element | £18,300 |
| BEng (Hons) Mechanical Engineering | 6.0 with a minimum of 5.5 per element | £18,300 |
| BSc (Hons) Computer Science | 6.0 with a minimum of 5.5 per element | £18,300 |
| BSc (Hons) Computer Science with Artificial Intelligence | 6.0 with a minimum of 5.5 per element | £18,300 |
| BSc (Hons) Computer Science with Cloud Computing | 6.0 with a minimum of 5.5 per element | £18,300 |
| BSc (Hons) Computer Science with Cyber Security | 6.0 with a minimum of 5.5 per element | £18,300 |
| BSc (Hons) Games Computing | 6.0 with a minimum of 5.5 per element | £18,300 |
| BSc (Hons) Games Computing with Virtual and Augmented Reality | 6.0 with a minimum of 5.5 per element | £18,300 |

**Tuition fees are charged for each year of study and are subject to an increase of 2% annually, rounded to the nearest £100. The most up-to-date information regarding tuition fees and additional study costs can be found on our website.

†Subject to validation.

School of Engineering and Physical Sciences

| Course Title | IELTS Requirements* | Tuition Fees** |
|---------------------------------------------------|---------------------------------------|----------------|
| BEng Mechatronics | 6.0 with a minimum of 5.5 per element | £18,300 |
| BSc (Hons) Mathematics | 6.0 with a minimum of 5.5 per element | £18,300 |
| BSc (Hons) Mathematics and Computer Science | 6.0 with a minimum of 5.5 per element | £18,300 |
| BSc (Hons) Mathematics and Theoretical Physics | 6.0 with a minimum of 5.5 per element | £18,300 |
| BSc (Hons) Mathematics with Philosophy | 6.0 with a minimum of 5.5 per element | £17,600 |
| BSc (Hons) Physics | 6.0 with a minimum of 5.5 per element | £18,300 |
| BSc (Hons) Physics with Astrophysics | 6.0 with a minimum of 5.5 per element | £18,300 |
| BSc (Hons) Physics with Philosophy | 6.0 with a minimum of 5.5 per element | £18,300 |
| MComp Computer Science | 6.0 with a minimum of 5.5 per element | £18,300 |
| MComp Games Computing | 6.0 with a minimum of 5.5 per element | £18,300 |
| MEng (Hons) Electrical and Electronic Engineering | 6.0 with a minimum of 5.5 per element | £18,300 |
| MEng (Hons) Mechanical Engineering | 6.0 with a minimum of 5.5 per element | £18,300 |
| MMath Mathematics | 6.0 with a minimum of 5.5 per element | £18,300 |
| MMath Mathematics and Theoretical Physics | 6.0 with a minimum of 5.5 per element | £18,300 |
| MPhys Physics | 6.0 with a minimum of 5.5 per element | £18,300 |
| MPhys Physics with Astrophysics | 6.0 with a minimum of 5.5 per element | £18,300 |
| MSci (Hons) Mathematics and Computer Science | 6.0 with a minimum of 5.5 per element | £18,300 |

*As an alternative to IELTS we also accept a wide range of English language qualifications and proficiency tests. Further information regarding the types of qualifications and tests we accept, and the scores/grades you will need, can be found on our website.

School of Health and Care Sciences

| Course Title | IELTS Requirements* | Tuition Fees** |
|-------------------------------------------------------------|---------------------------------------|----------------|
| BSc (Hons) Nursing (Registered Nurse – Adult) | 6.5 with a minimum of 6.0 per element | £18,300 |
| BSc (Hons) Pharmaceutical Science | 6.0 with a minimum of 5.5 per element | £18,300 |
| BSc (Hons) Public Health and Human Behaviour | 6.0 with a minimum of 5.5 per element | £18,300 |
| MPharm Pharmacy | 6.5 with a minimum of 6.0 per element | £18,300 |
| MSci Applied Pharmaceutical Science | 6.0 with a minimum of 5.5 per element | £18,300 |
| MSci (Hons) Pharmaceutical Science with Business Management | 6.0 with a minimum of 5.5 per element | £18,300 |

School of Natural Sciences

| Course Title | IELTS Requirements* | Tuition Fees** |
|---------------------------------------------------------|---------------------------------------|----------------|
| BA (Hons) Geography | 6.0 with a minimum of 5.5 per element | £18,300 |
| BSc (Hons) Animal Behaviour and Welfare | 6.0 with a minimum of 5.5 per element | £18,300 |
| BSc (Hons) Biochemistry | 6.0 with a minimum of 5.5 per element | £18,300 |
| BSc (Hons) Biology | 6.0 with a minimum of 5.5 per element | £18,300 |
| BSc (Hons) Biomedical Science | 6.0 with a minimum of 5.5 per element | £18,300 |
| BSc (Hons) Bioveterinary Science | 6.0 with a minimum of 5.5 per element | £18,300 |
| BSc (Hons) Chemistry | 6.0 with a minimum of 5.5 per element | £18,300 |
| BSc (Hons) Chemistry for Drug Discovery and Development | 6.0 with a minimum of 5.5 per element | £18,300 |
| BSc (Hons) Chemistry with Mathematics | 6.0 with a minimum of 5.5 per element | £18,300 |
| BSc (Hons) Ecology and Conservation | 6.0 with a minimum of 5.5 per element | £18,300 |
| BSc (Hons) Forensic Chemistry | 6.0 with a minimum of 5.5 per element | £18,300 |

**Tuition fees are charged for each year of study and are subject to an increase of 2% annually, rounded to the nearest £100. The most up-to-date information regarding tuition fees and additional study costs can be found on our website.

School of Natural Sciences

| Course Title | IELTS Requirements* | Tuition Fees** |
|----------------------------------------------------|---------------------------------------|----------------|
| BSc (Hons) Forensic Science | 6.0 with a minimum of 5.5 per element | £18,300 |
| BSc (Hons) Geography | 6.0 with a minimum of 5.5 per element | £18,300 |
| BSc (Hons) Zoology | 6.0 with a minimum of 5.5 per element | £18,300 |
| MBio Animal Behaviour and Welfare | 6.0 with a minimum of 5.5 per element | £18,300 |
| MBio Biochemistry | 6.0 with a minimum of 5.5 per element | £18,300 |
| MBio Biology | 6.0 with a minimum of 5.5 per element | £18,300 |
| MBio Biomedical Science | 6.0 with a minimum of 5.5 per element | £18,300 |
| MBio Bioveterinary Science | 6.0 with a minimum of 5.5 per element | £18,300 |
| MBio Ecology and Conservation | 6.0 with a minimum of 5.5 per element | £18,300 |
| MBio Zoology | 6.0 with a minimum of 5.5 per element | £18,300 |
| MChem Chemistry | 6.0 with a minimum of 5.5 per element | £18,300 |
| MChem Chemistry for Drug Discovery and Development | 6.0 with a minimum of 5.5 per element | £18,300 |
| MChem Chemistry with Mathematics | 6.0 with a minimum of 5.5 per element | £18,300 |
| MChem Forensic Chemistry | 6.0 with a minimum of 5.5 per element | £18,300 |
| MGeog (Hons) Human Geography | 6.0 with a minimum of 5.5 per element | £18,300 |
| MGeog (Hons) Physical Geography | 6.0 with a minimum of 5.5 per element | £18,300 |

*As an alternative to IELTS we also accept a wide range of English language qualifications and proficiency tests. Further information regarding the types of qualifications and tests we accept, and the scores/grades you will need, can be found on our website.

School of Psychology, Sport Science and Wellbeing

| Course Title | IELTS Requirements* | Tuition Fees** |
|--------------------------------------------------------|---------------------------------------|----------------|
| BSc (Hons) Physical Education and Sport‡ | 6.0 with a minimum of 5.5 per element | £18,300 |
| BSc (Hons) Psychology‡ | 6.0 with a minimum of 5.5 per element | £18,300 |
| BSc (Hons) Psychology (Sport and Exercise Psychology)‡ | 6.0 with a minimum of 5.5 per element | £18,300 |
| BSc (Hons) Psychology with Forensic Psychology‡ | 6.0 with a minimum of 5.5 per element | £18,300 |
| BSc (Hons) Psychology with Mental Health‡ | 6.0 with a minimum of 5.5 per element | £18,300 |
| BSc (Hons) Sport and Exercise Science‡ | 6.0 with a minimum of 5.5 per element | £18,300 |
| BSc (Hons) Sport and Exercise Therapy‡ | 6.0 with a minimum of 5.5 per element | £18,300 |

School of Social and Political Sciences

| Course Title | IELTS Requirements* | Tuition Fees** |
|------------------------------------------------|---------------------------------------|----------------|
| BA (Hons) Criminology | 6.0 with a minimum of 5.5 per element | £16,900 |
| BA (Hons) Criminology and Sociology | 6.0 with a minimum of 5.5 per element | £16,900 |
| BA (Hons) International Relations | 6.0 with a minimum of 5.5 per element | £16,900 |
| BA (Hons) International Relations and Politics | 6.0 with a minimum of 5.5 per element | £16,900 |
| BA (Hons) Politics | 6.0 with a minimum of 5.5 per element | £16,900 |
| BA (Hons) Sociology | 6.0 with a minimum of 5.5 per element | £16,900 |

**Tuition fees are charged for each year of study and are subject to an increase of 2% annually, rounded to the nearest £100. The most up-to-date information regarding tuition fees and additional study costs can be found on our website.

‡Subject to revalidation.

Postgraduate Taught Study

Whether you're looking to study a subject you love or move into a new career, postgraduate study at Lincoln can help you to develop your knowledge, build new skills, or even prepare you to start your own business.

Master's Degrees

We offer a wide range of full-time postgraduate taught courses, otherwise known as Master's degrees, which normally take 12 months to complete and are comprised of three main stages.

The first two stages are Postgraduate Certificate and Postgraduate Diploma, and consist of a number of primarily taught modules that are individually assessed. The third stage, the Master's level, usually consists of an individual research-based project supervised by an academic with expertise in the subject area.

Our taught courses are delivered in a variety of ways, from weekly tutorial and seminar programmes to modular study blocks, and involve a significant amount of independent study.

Flexible Learning Courses

In addition to our on-campus courses, we offer a variety of flexible options, including online Master's degrees and micro credentials, on-campus short courses, and work-based learning programmes. These can be a great option if you're returning to education after a break, looking to gain additional skills, or pursuing a particular interest.



Scan the QR code
to find out more



Ranked in the top 10 in the
UK for postgraduate support

Postgraduate Taught Experience Survey (2024)



Lincoln Institute for Agri-Food Technology

| Course Title | IELTS Requirements* | Tuition Fees** |
|-----------------------------------------------------|---------------------------------------|----------------|
| MSc Agri-food Technology | 6.0 with a minimum of 5.5 per element | £18,800 |
| MSc Agri-food Technology with Professional Practice | 6.0 with a minimum of 5.5 per element | £18,800 |
| MSc Food Manufacturing | 6.0 with a minimum of 5.5 per element | £18,800 |

Lincoln International Business School

| Course Title | IELTS Requirements* | Tuition Fees** |
|---------------------------------------------------------------|---------------------------------------|----------------|
| MA Cultural Heritage Management‡ | 6.0 with a minimum of 5.5 per element | £19,300 |
| MBA Master of Business Administration‡ | 6.0 with a minimum of 5.5 per element | £22,100 |
| MSc Accounting and Financial Management‡ | 6.0 with a minimum of 5.5 per element | £19,300 |
| MSc Banking and Finance | 6.0 with a minimum of 5.5 per element | £19,300 |
| MSc Digital Marketing‡ | 6.0 with a minimum of 5.5 per element | £19,300 |
| MSc Economics | 6.0 with a minimum of 5.5 per element | £19,300 |
| MSc Human Resource Management | 6.0 with a minimum of 5.5 per element | £19,300 |
| MSc International Business‡ | 6.0 with a minimum of 5.5 per element | £19,300 |
| MSc International Tourism, Hospitality and Events Management‡ | 6.0 with a minimum of 5.5 per element | £19,300 |
| MSc Management | 6.0 with a minimum of 5.5 per element | £19,300 |
| MSc Management with Human Resources | 6.0 with a minimum of 5.5 per element | £19,300 |
| MSc Management with Project Management | 6.0 with a minimum of 5.5 per element | £19,300 |
| MSc Marketing‡ | 6.0 with a minimum of 5.5 per element | £19,300 |
| MSc Project Management | 6.0 with a minimum of 5.5 per element | £19,300 |
| MSc Supply Chain and Logistics Management | 6.0 with a minimum of 5.5 per element | £19,300 |

*As an alternative to IELTS we also accept a wide range of English language qualifications and proficiency tests. Further information regarding the types of qualifications and tests we accept, and the scores/grades you will need, can be found on our website.

‡Subject to revalidation.

Lincoln Law School

| Course Title | IELTS Requirements* | Tuition Fees** |
|------------------------------------------------|---------------------------------------|----------------|
| MA Criminology and Criminal Justice | 6.5 with a minimum of 6.0 per element | £17,400 |
| LLM International Corporate and Commercial Law | 6.0 with a minimum of 5.5 per element | £17,400 |
| LLM International Law | 6.0 with a minimum of 5.5 per element | £17,400 |

Lincoln School of Creative Arts

| Course Title | IELTS Requirements* | Tuition Fees** |
|---------------------------------|---------------------------------------|----------------|
| MA Arts and Cultural Management | 6.5 with a minimum of 6.0 per element | £18,800 |
| MA Creative Arts† | 6.5 with a minimum of 6.0 per element | £18,800 |
| MA Creative Writing | 7.0 with a minimum of 6.5 per element | £17,400 |
| MA Film Production‡ | 6.5 with a minimum of 6.0 per element | £18,800 |

Lincoln School of Design and Architecture

| Course Title | IELTS Requirements* | Tuition Fees** |
|----------------------------------------------------------------|---------------------------------------|----------------|
| MA Interior Architecture and Design | 6.0 with a minimum of 5.5 per element | £18,800 |
| MA Interior Architecture and Design with Professional Practice | 6.0 with a minimum of 5.5 per element | £18,800 |
| MArch Master of Architecture | 6.5 with a minimum of 6.0 per element | £18,800 |

**Tuition fees are charged for each year of study and are subject to an increase of 2% annually, rounded to the nearest £100. The most up-to-date information regarding tuition fees and additional study costs can be found on our website.

†Subject to validation. ‡Subject to revalidation.

Lincoln School of Humanities and Heritage

| Course Title | IELTS Requirements* | Tuition Fees** |
|--------------------------------------|---------------------------------------|----------------|
| MA Conservation of Cultural Heritage | 6.5 with a minimum of 6.0 per element | £18,800 |
| MA English Literature | 7.0 with a minimum of 6.5 per element | £17,400 |
| MA Medieval Studies | 6.5 with a minimum of 6.0 per element | £17,400 |

School of Education and Communication

| Course Title | IELTS Requirements* | Tuition Fees** |
|-----------------------------|---------------------------------------|----------------|
| MA Education | 6.0 with a minimum of 5.5 per element | £17,400 |
| MA Media and Communications | 6.5 with a minimum of 6.0 per element | £18,800 |

School of Engineering and Physical Sciences

| Course Title | IELTS Requirements* | Tuition Fees** |
|--------------------------------------------------|---------------------------------------|----------------|
| MSc Advanced Mechanical Engineering | 6.0 with a minimum of 5.5 per element | £18,800 |
| MSc Applied Computer Science | 6.0 with a minimum of 5.5 per element | £18,800 |
| MSc Artificial Intelligence | 6.0 with a minimum of 5.5 per element | £18,800 |
| MSc Chemical Engineering with Sustainability | 6.0 with a minimum of 5.5 per element | £18,800 |
| MSc Chemical Engineering with Project Management | 6.0 with a minimum of 5.5 per element | £18,800 |
| MSc Cloud Computing | 6.0 with a minimum of 5.5 per element | £18,800 |
| MSc Computer Science | 6.0 with a minimum of 5.5 per element | £18,800 |
| MSc Data Science and Applied Analytics | 6.0 with a minimum of 5.5 per element | £18,800 |
| MSc Engineering Management | 6.0 with a minimum of 5.5 per element | £18,800 |
| MSc Games Development | 6.0 with a minimum of 5.5 per element | £18,800 |
| MSc Robotics and Artificial Intelligence | 6.0 with a minimum of 5.5 per element | £18,800 |

*As an alternative to IELTS we also accept a wide range of English language qualifications and proficiency tests. Further information regarding the types of qualifications and tests we accept, and the scores/grades you will need, can be found on our website.

School of Health and Care Sciences

| Course Title | IELTS Requirements* | Tuition Fees** |
|----------------------------------------------------|---------------------------------------|----------------|
| MPH Master in Public Health | 6.5 with a minimum of 6.0 per element | £18,800 |
| MSc Contemporary Physiotherapy Practice | 6.5 with a minimum of 5.5 per element | £18,800 |
| MSc Nursing (Pre-registration – Adult)‡ | 6.5 with a minimum of 5.5 per element | £18,800 |
| MSc Occupational Therapy (Pre-registration) | 7.0 with a minimum of 6.5 per element | £18,800 |
| MSc Physiotherapy (Pre-registration) | 7.0 with a minimum of 6.5 per element | £18,800 |
| MSc Speech and Language Therapy (Pre-registration) | 8.0 with a minimum of 7.5 per element | £18,800 |

School of Natural Sciences

| Course Title | IELTS Requirements* | Tuition Fees** |
|-----------------------------------------------------|---------------------------------------|----------------|
| MSc Analytical Sciences | 6.0 with a minimum of 5.5 per element | £18,800 |
| MSc Biodiversity, Conservation, and Nature Recovery | 6.0 with a minimum of 5.5 per element | £19,300 |
| MSc Biotechnology | 6.0 with a minimum of 5.5 per element | £18,800 |
| MSc Clinical Animal Behaviour | 6.0 with a minimum of 5.5 per element | £18,800 |
| MSc Forensic Science | 6.0 with a minimum of 5.5 per element | £18,800 |
| MSc Forensic Toxicology | 6.0 with a minimum of 5.5 per element | £18,800 |
| MSc Microbiology | 6.0 with a minimum of 5.5 per element | £18,800 |

**Tuition fees are charged for each year of study and are subject to an increase of 2% annually, rounded to the nearest £100. The most up-to-date information regarding tuition fees and additional study costs can be found on our website.

‡Subject to revalidation.

School of Psychology, Sport Science and Wellbeing

| Course Title | IELTS Requirements* | Tuition Fees** |
|------------------------------------|---------------------------------------|----------------|
| MSc Developmental Psychology | 6.0 with a minimum of 5.5 per element | £18,800 |
| MSc Forensic Psychology | 6.0 with a minimum of 5.5 per element | £18,800 |
| MSc Psychological Research Methods | 6.0 with a minimum of 5.5 per element | £18,800 |

School of Social and Political Sciences

| Course Title | IELTS Requirements* | Tuition Fees** |
|-------------------------------------|---------------------------------------|----------------|
| MA Gender Studies | 6.0 with a minimum of 5.5 per element | £17,400 |
| MA International Relations | 6.0 with a minimum of 5.5 per element | £17,400 |
| MSc Politics, Policy and Leadership | 6.0 with a minimum of 5.5 per element | £17,400 |

*As an alternative to IELTS we also accept a wide range of English language qualifications and proficiency tests. Further information regarding the types of qualifications and tests we accept, and the scores/grades you will need, can be found on our website.

**Tuition fees are charged for each year of study and are subject to an increase of 2% annually, rounded to the nearest £100. The most up-to-date information regarding tuition fees and additional study costs can be found on our website.



Postgraduate Research

A research degree offers a tailored, supervised approach to study and is especially suited to students wanting to focus on a specific area of interest and make an original contribution to knowledge.

At Lincoln, we offer several different types of research degrees, and which course is right for you will depend on a number of factors, including your current stage of study and your career aspirations.

Master's by Research

MA/MSc by Research are Master's-level courses that take up to 16 months to complete and don't usually include lectures or seminars. They can provide a good foundation for those wanting to progress to an MPhil or PhD.

MPhil/PhD

An MPhil can be a standalone qualification or form part of a PhD and takes 18–32 months to complete. It comprises a substantial piece of research that demonstrates a critical understanding of an aspect of an academic discipline.

A PhD is the highest level of postgraduate research qualification and usually takes between three and four years to complete. It culminates in a thesis, which makes an original contribution to knowledge in an academic discipline.

Lincoln Doctoral School

Our postgraduate research students form an important part of our research community. Lincoln's Doctoral School is a focal point for our research students and brings together opportunities for collaboration, as well as offering support and training programmes that help nurture creativity.

With a real focus on your career goals, we regularly provide opportunities to work alongside our expert academics and gain insider knowledge in your chosen field. You can also get involved in the innovative research that is taking place at Lincoln by working on individual projects or collaborating with our researchers across a dynamic range of institutes, centres, and groups.



Scan the QR code
to find out more



Eleanor Glanville Institute

| Course Title | IELTS Requirements* | Tuition Fees** |
|--------------------------------------------------|---------------------------------------|----------------|
| MA by Research Equality, Diversity and Inclusion | 6.5 with a minimum of 6.0 per element | £16,900 |
| MPhil/PhD Equality, Diversity and Inclusion | 6.5 with a minimum of 6.0 per element | £16,900 |

Lincoln Institute for Agri-Food Technology

| Course Title | IELTS Requirements* | Tuition Fees** |
|-----------------------------------------------------|---------------------------------------|----------------|
| MPhil/PhD Agricultural Science and Technology | 6.5 with a minimum of 6.0 per element | £18,900 |
| MSc by Research Agricultural Science and Technology | 6.5 with a minimum of 6.0 per element | £18,900 |

Lincoln International Business School

| Course Title | IELTS Requirements* | Tuition Fees** |
|-------------------------------------------|---------------------------------------|----------------|
| MPhil/PhD Culture and Heritage Management | 6.5 with a minimum of 6.0 per element | £16,900 |
| MPhil/PhD Economics | 6.5 with a minimum of 6.0 per element | £16,900 |
| MPhil/PhD Finance | 6.5 with a minimum of 6.0 per element | £16,900 |
| MPhil/PhD Human Resource Management | 6.5 with a minimum of 6.0 per element | £16,900 |
| MPhil/PhD Logistics Management | 6.5 with a minimum of 6.0 per element | £16,900 |
| MPhil/PhD Management | 6.5 with a minimum of 6.0 per element | £16,900 |
| MPhil/PhD Marketing | 6.5 with a minimum of 6.0 per element | £16,900 |
| MPhil/PhD Tourism | 6.5 with a minimum of 6.0 per element | £16,900 |

*As an alternative to IELTS we also accept a wide range of English language qualifications and proficiency tests. Further information regarding the types of qualifications and tests we accept, and the scores/grades you will need, can be found on our website.

Lincoln Law School

| Course Title | IELTS Requirements* | Tuition Fees** |
|---------------|---------------------------------------|----------------|
| MPhil/PhD Law | 6.5 with a minimum of 6.0 per element | £16,900 |

Lincoln School of Creative Arts

| Course Title | IELTS Requirements* | Tuition Fees** |
|--------------------------------------------------|---------------------------------------|----------------|
| MA by Research Art | 6.5 with a minimum of 5.5 per element | £18,900 |
| MA by Research Journalism | 7.0 with a minimum of 6.5 per element | £18,900 |
| MA by Research Media and Cultural Studies | 6.5 with a minimum of 6.0 per element | £18,900 |
| MPhil/PhD Art | 6.5 with a minimum of 5.5 per element | £18,900 |
| MPhil/PhD Creative Writing | 7.0 with a minimum of 6.5 per element | £16,900 |
| MPhil/PhD Drama | 6.5 with a minimum of 6.0 per element | £18,900 |
| MPhil/PhD Journalism | 7.0 with a minimum of 6.5 per element | £18,900 |
| MPhil/PhD Media (including by practice) | 6.5 with a minimum of 6.0 per element | £18,900 |
| MPhil/PhD Media and Cultural Studies | 6.5 with a minimum of 6.0 per element | £18,900 |
| MPhil/PhD Music | 6.5 with a minimum of 5.5 per element | £18,900 |
| MPhil/PhD Performing Arts Research Opportunities | 6.5 with a minimum of 6.0 per element | £18,900 |

**Tuition fees are charged for each year of study and are subject to an increase of 2% annually, rounded to the nearest £100. The most up-to-date information regarding tuition fees and additional study costs can be found on our website.

Lincoln School of Design and Architecture

| Course Title | IELTS Requirements* | Tuition Fees** |
|-------------------------------------------------|---------------------------------------|----------------|
| MA by Research Design | 6.5 with a minimum of 6.0 per element | £18,900 |
| MPhil/PhD Architecture – Research Opportunities | 6.5 with a minimum of 5.5 per element | £18,900 |
| MPhil/PhD Construction Science and Management | 6.5 with a minimum of 6.0 per element | £18,900 |
| MPhil/PhD Design | 6.5 with a minimum of 6.0 per element | £18,900 |

Lincoln School of Humanities and Heritage

| Course Title | IELTS Requirements* | Tuition Fees** |
|---------------------------------------------|---------------------------------------|----------------|
| MA by Research Classical Studies | 7.0 with a minimum of 6.5 per element | £16,900 |
| MA by Research Conservation | 6.5 with a minimum of 6.0 per element | £18,900 |
| MA by Research English | 7.0 with a minimum of 6.5 per element | £16,900 |
| MA by Research History | 7.0 with a minimum of 6.5 per element | £16,900 |
| MA by Research Philosophy | 7.0 with a minimum of 6.5 per element | £16,900 |
| MPhil/PhD Classical Studies | 7.0 with a minimum of 6.5 per element | £16,900 |
| MPhil/PhD Conservation of Cultural Heritage | 7.0 with a minimum of 6.5 per element | £18,900 |
| MPhil/PhD English | 7.0 with a minimum of 6.5 per element | £16,900 |
| MPhil/PhD History | 7.0 with a minimum of 6.5 per element | £16,900 |
| MPhil/PhD Medieval Studies | 7.0 with a minimum of 6.5 per element | £16,900 |
| MPhil/PhD Philosophy | 7.0 with a minimum of 6.5 per element | £16,900 |

*As an alternative to IELTS we also accept a wide range of English language qualifications and proficiency tests. Further information regarding the types of qualifications and tests we accept, and the scores/grades you will need, can be found on our website.

National Centre for Food Manufacturing

| Course Title | IELTS Requirements* | Tuition Fees** |
|--------------------------------------------------------------|---------------------------------------|----------------|
| MPhil/PhD Food Manufacturing and Technology | 6.0 with a minimum of 5.5 per element | £18,900 |
| MSc by Research Food Processing and Manufacturing Management | 6.0 with a minimum of 5.5 per element | £18,900 |
| MSc by Research Food Science | 6.0 with a minimum of 5.5 per element | £18,900 |

School of Education and Communication

| Course Title | IELTS Requirements* | Tuition Fees** |
|-----------------------------------------------------|---------------------------------------|----------------|
| MA by Research Educational Research and Development | 6.5 with a minimum of 6.0 per element | £16,900 |
| MPhil/PhD Educational Research and Development | 6.5 with a minimum of 6.0 per element | £16,900 |
| PhD (Professional) Education | 6.0 with a minimum of 5.5 per element | £16,900 |

School of Engineering and Physical Sciences

| Course Title | IELTS Requirements* | Tuition Fees** |
|------------------------------------------------|---------------------------------------|----------------|
| MPhil/PhD Advanced Technology and Applications | 6.0 with a minimum of 5.5 per element | £18,900 |
| MPhil/PhD Applied Mathematics | 6.0 with a minimum of 5.5 per element | £18,900 |
| MPhil/PhD Astrophysics | 6.0 with a minimum of 5.5 per element | £18,900 |
| MPhil/PhD Computational Physics | 6.0 with a minimum of 5.5 per element | £18,900 |
| MPhil/PhD Computer Science | 6.0 with a minimum of 5.5 per element | £18,900 |
| MPhil/PhD Engineering | 6.0 with a minimum of 5.5 per element | £18,900 |
| MPhil/PhD Mathematics | 6.0 with a minimum of 5.5 per element | £18,900 |

**Tuition fees are charged for each year of study and are subject to an increase of 2% annually, rounded to the nearest £100. The most up-to-date information regarding tuition fees and additional study costs can be found on our website.

School of Engineering and Physical Sciences

| Course Title | IELTS Requirements* | Tuition Fees** |
|----------------------------------------------|---------------------------------------|----------------|
| MPhil/PhD Nanomaterials Science | 6.0 with a minimum of 5.5 per element | £18,900 |
| MPhil/PhD Philosophy of Physics | 6.0 with a minimum of 5.5 per element | £18,900 |
| MPhil/PhD Physical and Mathematical Sciences | 6.0 with a minimum of 5.5 per element | £18,900 |
| MPhil/PhD Physics | 6.0 with a minimum of 5.5 per element | £18,900 |
| MPhil/PhD Pure Mathematics | 6.0 with a minimum of 5.5 per element | £18,900 |
| MPhil/PhD Theoretical Physics | 6.0 with a minimum of 5.5 per element | £18,900 |
| MSc by Research Applied Mathematics | 6.0 with a minimum of 5.5 per element | £18,900 |
| MSc by Research Computational Physics | 6.0 with a minimum of 5.5 per element | £18,900 |
| MSc by Research Computer Science | 6.0 with a minimum of 5.5 per element | £18,900 |
| MSc by Research Engineering | 6.0 with a minimum of 5.5 per element | £18,900 |
| MSc by Research Nanomaterials Science | 6.0 with a minimum of 5.5 per element | £18,900 |

School of Health and Care Sciences

| Course Title | IELTS Requirements* | Tuition Fees** |
|---------------------------------------------------------|---------------------------------------|----------------|
| MPhil/PhD Health and Social Care Research Opportunities | 6.0 with a minimum of 5.5 per element | £18,900 |
| MPhil/PhD Pharmacy and Pharmaceutical Sciences | 6.0 with a minimum of 5.5 per element | £18,900 |
| MSc by Research Health and Social Care | 6.0 with a minimum of 5.5 per element | £18,900 |
| MSc by Research Pharmacy and Pharmaceutical Sciences | 6.0 with a minimum of 5.5 per element | £18,900 |
| PhD Practice Portfolio in Health and Social Care | 7.0 with a minimum of 6.5 per element | £18,900 |

*As an alternative to IELTS we also accept a wide range of English language qualifications and proficiency tests. Further information regarding the types of qualifications and tests we accept, and the scores/grades you will need, can be found on our website.

School of Natural Sciences

| Course Title | IELTS Requirements* | Tuition Fees** |
|----------------------------------------------------|---------------------------------------|----------------|
| MA by Research Geography | 6.0 with a minimum of 5.5 per element | £18,900 |
| MPhil/PhD Animal Behaviour and Welfare | 6.0 with a minimum of 5.5 per element | £18,900 |
| MPhil/PhD Biochemistry and Molecular Biology | 6.0 with a minimum of 5.5 per element | £18,900 |
| MPhil/PhD Biology | 6.0 with a minimum of 5.5 per element | £18,900 |
| MPhil/PhD Biomedical Science | 6.0 with a minimum of 5.5 per element | £18,900 |
| MPhil/PhD Bioveterinary Science | 6.0 with a minimum of 5.5 per element | £18,900 |
| MPhil/PhD Chemistry | 6.0 with a minimum of 5.5 per element | £18,900 |
| MPhil/PhD Evolution and Ecology | 6.0 with a minimum of 5.5 per element | £18,900 |
| MPhil/PhD Forensic Science | 6.0 with a minimum of 5.5 per element | £18,900 |
| MPhil/PhD Human Geography | 6.0 with a minimum of 5.5 per element | £18,900 |
| MPhil/PhD Microbiology | 6.0 with a minimum of 5.5 per element | £18,900 |
| MPhil/PhD Physical Geography | 6.0 with a minimum of 5.5 per element | £18,900 |
| MPhil/PhD Zoology | 6.0 with a minimum of 5.5 per element | £18,900 |
| MSc by Research Animal Behaviour and Welfare | 6.0 with a minimum of 5.5 per element | £18,900 |
| MSc by Research Biochemistry and Molecular Biology | 6.0 with a minimum of 5.5 per element | £18,900 |
| MSc by Research Biology | 6.0 with a minimum of 5.5 per element | £18,900 |
| MSc by Research Biomedical Science | 6.0 with a minimum of 5.5 per element | £18,900 |
| MSc by Research Bioveterinary Science | 6.0 with a minimum of 5.5 per element | £18,900 |
| MSc by Research Chemistry | 6.0 with a minimum of 5.5 per element | £18,900 |
| MSc by Research Evolution and Ecology | 6.0 with a minimum of 5.5 per element | £18,900 |
| MSc by Research Forensic Science | 6.0 with a minimum of 5.5 per element | £18,900 |

**Tuition fees are charged for each year of study and are subject to an increase of 2% annually, rounded to the nearest £100. The most up-to-date information regarding tuition fees and additional study costs can be found on our website.

School of Natural Sciences

| Course Title | IELTS Requirements* | Tuition Fees** |
|------------------------------|---------------------------------------|----------------|
| MSc by Research Geography | 6.0 with a minimum of 5.5 per element | £18,900 |
| MSc by Research Microbiology | 6.0 with a minimum of 5.5 per element | £18,900 |
| MSc by Research Zoology | 6.0 with a minimum of 5.5 per element | £18,900 |

School of Psychology, Sport Science and Wellbeing

| Course Title | IELTS Requirements* | Tuition Fees** |
|-----------------------------------------------------------|---------------------------------------|----------------|
| MPhil/PhD Psychology – Research Opportunities | 6.5 with a minimum of 6.0 per element | £18,900 |
| MPhil/PhD Sport and Exercise Science/Sports Studies | 6.0 with a minimum of 5.5 per element | £18,900 |
| MSc by Research Sport and Exercise Science/Sports Studies | 6.0 with a minimum of 5.5 per element | £18,900 |

School of Social and Political Sciences

| Course Title | IELTS Requirements* | Tuition Fees** |
|-----------------------------------|---------------------------------------|----------------|
| MPhil/PhD Criminology | 7.0 with a minimum of 6.5 per element | £16,900 |
| MPhil/PhD International Relations | 7.0 with a minimum of 6.5 per element | £16,900 |
| MPhil/PhD Politics | 7.0 with a minimum of 6.5 per element | £16,900 |
| MPhil/PhD Social Policy | 7.0 with a minimum of 6.5 per element | £16,900 |
| MPhil/PhD Social Sciences | 7.0 with a minimum of 6.5 per element | £16,900 |
| MPhil/PhD Sociology | 7.0 with a minimum of 6.5 per element | £16,900 |

*As an alternative to IELTS we also accept a wide range of English language qualifications and proficiency tests. Further information regarding the types of qualifications and tests we accept, and the scores/grades you will need, can be found on our website.

**Tuition fees are charged for each year of study and are subject to an increase of 2% annually, rounded to the nearest £100. The most up-to-date information regarding tuition fees and additional study costs can be found on our website.



Prospectus Information

Every effort has been made to ensure the accuracy of the information contained in this International Prospectus at the time of going to print (July 2025). For the most up-to-date information, please visit our website at www.lincoln.ac.uk.

If there is any inconsistency between the information in this International Prospectus and the information on our website, the information on our website should be taken as correct.

Specific terms and conditions in relation to the contract that exists between applicants and the University can be found at www.lincoln.ac.uk/terms.

Photography by:

Adobe Stock, Andrew Scott, Electric Egg, Shutterstock, Steve Smailes Photography, and University of Lincoln Students' Union.

Sustainability

This brochure is printed in the UK by a carbon-balanced printer using green energy and vegan inks on FSC accredited recycled paper. It is fully recyclable and biodegradable, supporting a more sustainable and environmentally conscious approach to print.





UNIVERSITY OF
LINCOLN

University of Lincoln
Brayford Pool
Lincoln, LN6 7TS
United Kingdom

Tel: +44 (0)1522 308108
WhatsApp: +44 (0)7868 089210
internationalenquiries@lincoln.ac.uk
www.lincoln.ac.uk